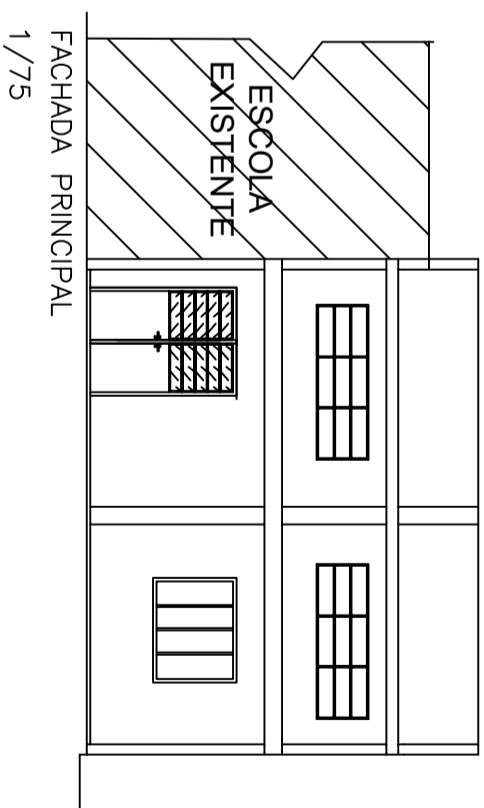
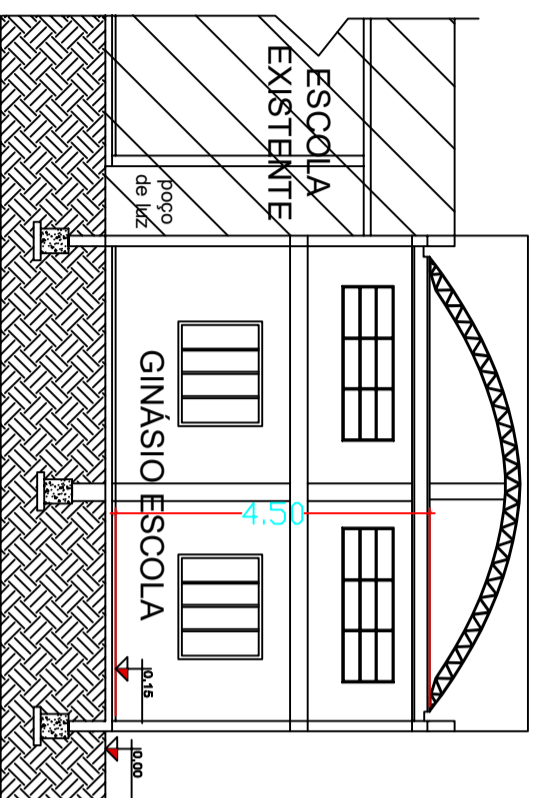


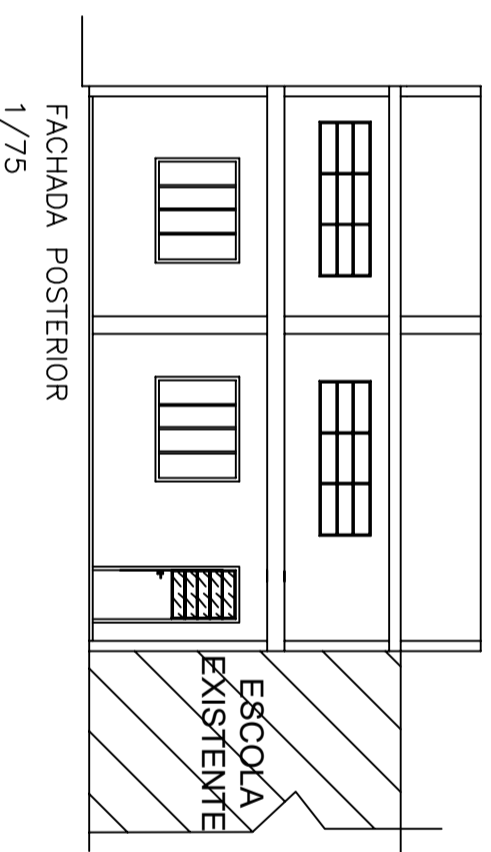
CORTE AA
1/75



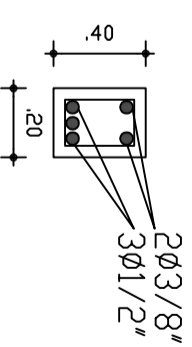
FACHADA PRINCIPAL
1/75



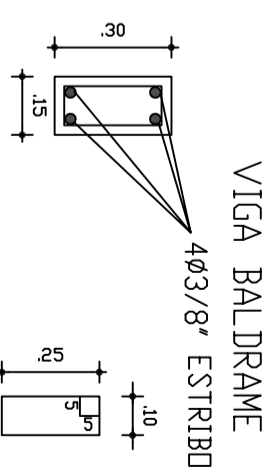
CORTE BB
1/75



FACHADA POSTERIOR
1/75



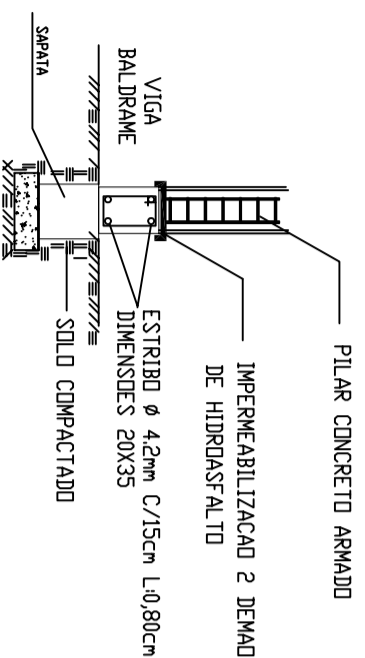
VIGAS DE CINTAMENTO



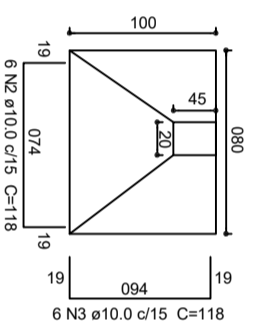
VIGA BALDRAME
4Ø3/8" ESTRIBO

∩ ϕ 4,2mm L=80cm
C/ 20cm

DETALHE DAS FUNDAÇÕES

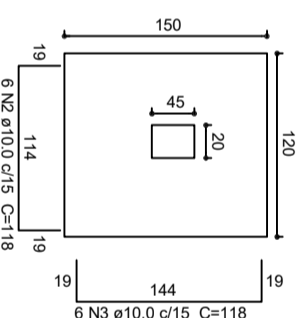


SAPATAS CANTOS
Planta
ESC 1:25



6 N3 ø10.0 c/15 C=118

SAPATAS
Planta
ESC 1:25



6 N3 ø10.0 c/15 C=118

DIREITOS AUTORAIS RESERVADOS. LEI 9.610 DE 19.02.98.



PREFEITURA MUNICIPAL DE SARANDI

Palácio Municipal Dr. Mário Azambuja
PRAÇA GETULIO VARGAS S/N-SARANDI-RS

Projeto: CONSTRUÇÃO GINÁSIO CRECHE BALÃO MÁGICO
RUA MARCILIO DIAS- SARANDI-RS

data: JUNHO/2016

Proprietário: PREFEITURA MUNICIPAL DE SARANDI
Prefeito Municipal- Paulo R. Vicari Kasper

área total: 130,00m²

Responsável Técnico: JUNIOR VALMOR DE CARLI
Arquiteto e Urbanista
CAU-RS 45627/RS

esc: INDICADA

Projeto: CORTES, FACHADAS E DETALHAMENTOS ESTRUTURAIS

pranchas: 03/04